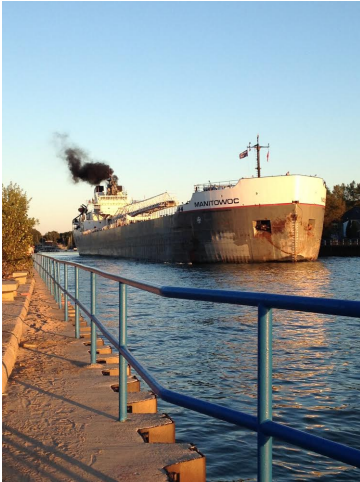


Social Studies 309: Geo-Diary Brochure

By: Emily Ringquist

Home – Holland, Michigan

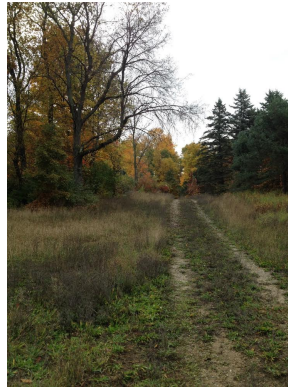


Holland State Park

6:20pm Thursday, October 2nd East

At Holland State Park, a freight came through the Holland Channel entering into Lake Michigan. The freight was transporting goods to other locations and using resources and their interactions with people (Movement; Human Environment Interactions).

Trails

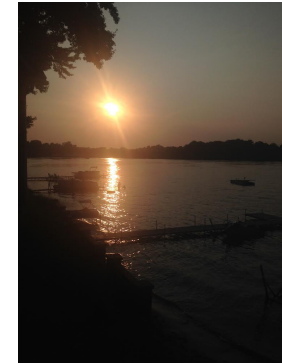


Trail by Employer's House

8:49am Tuesday, October 14th Southwest

I babysit for a family every morning and take the dog on a walk through the trails nearby. I see a lot of wild life in this ecosystem and it looks so beautiful in the fall. This is located roughly 3 miles north of Lake Michigan Drive (Region).

Sunset



Crystal Lake Sunset

8:15pm Monday, September 1st West

Crystal Lake is a lake up north that my grandparents live on and is a vacation location for my family. There are a large number of different types of fish who call the lake their home and many fishers come to the lake to fish (Physical Characteristics of Place).

Stores

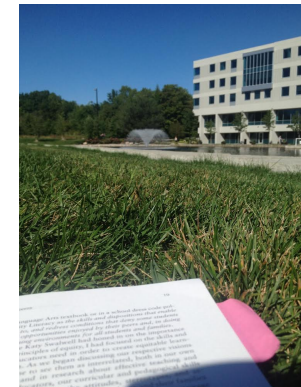


Target

2:50pm Friday, October 18th East

Last summer I worked at Target located at 3456 West Shore Dr in Holland, Michigan. I worked here for 2 years and come to Target on a regular basis. I have spent morning unloading goods that come to our store (Movement of Goods, Absolute Location).

Campus



Zumberge Pond

2:45pm Friday, October 17th Northeast

Zumberge Pond is located east of Kirkhof building close to the middle of campus. It is a great place to work on homework (Relative Location).

